



Michelle Lordi



DRIVE

- 1 YOU'RE MY THRILL 5:18
- 2 IMAGINATION 7:12
- 3 TRUE LOVE 5:21
- 4 MY SHIP 5:08
- 5 IF I ONLY HAD A HEART 5:37
- 6 I FALL IN LOVE TOO EASILY 5:04
- 7 MY IDEAL 5:46
- 8 GHOST OF A CHANCE 4:57
- 9 NOW AT LAST 4:09
- 10 DRIVE 5:31

Orrin Evans PIANO (TRACKS 4, 6, & 10)
 Tom Lawton PIANO
 Larry McKenna TENOR SAX
 Madison Rast BASS
 Dan Monaghan DRUMS

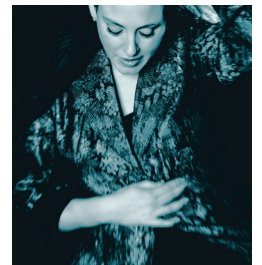
PRODUCED BY Orrin Evans
 RECORDED, MIXED AND MASTERED BY
 Ron Disilvestro
 AT Forge Recording Studios
 ORELAND, PA • DECEMBER 2014



610.937.0308
 michellelordi@gmail.com
 michellelordi.com

Combining a voice of unique clarity and grace with subtle emotional depth and eclectic tastes, singer Michelle Lordi takes listeners on a moving, captivating personal journey on her breakthrough CD, *Drive*. The deeply-felt album, to be released in 2015, mines ten favorites from the Philadelphia-based singer's varied repertoire, which finds inspiration in American Songbook classics and modern pop hits alike.

Along with her passion for music, Lordi has also long been fascinated by natural history and the visual arts. *Drive* was shaped in part by her interest in Victorian cabinets of wonder, eccentric collections of modern wonders gathered and displayed that became the precursors of modern museums. The stellar band of Philly jazz greats that supports Lordi is just such an assemblage of marvels, collected over several busy years headlining venues throughout the Philadelphia area. The band includes legendary tenor saxophonist Larry McKenna, pianist Tom Lawton, bassist Madison Rast, and drummer Dan Monaghan, as well as Grammy nominated pianist Orrin Evans, who also produced the album with his trademark insightful spontaneity.



But the true collection of wonders on *Drive* is Lordi's choice of songs, which ranges from her sultry take on the standard "You're My Thrill," through a bluesy interpretation of "If I Only Had a Heart" from *The Wizard of Oz*, to the title track, a heartbreaking reimagining of The Cars' 1984 hit. Steering directly to the heart of each song, Lordi has gathered ten well-loved wonders that unexpectedly converge to conjure a vivid portrait of love and loss.

PRESS

“Michelle Lordi sings in a way that is uncommon today: simple, straightforward, direct, and conveying the emotions in the way we all do: in our voice inflections. No gimmicks...Cool uncorrupted understatement that swings is a way to describe Lordi's vocal style in a nutshell. Her voice is clear and never shrill, her diction is flawless, and she uses almost no vibrato. So what you get is the pure unadulterated song.”

VICTOR SCHERMER
Jazz Near You, OCTOBER 2014